

Andante mod^{to}

Nº 6.

Moderato

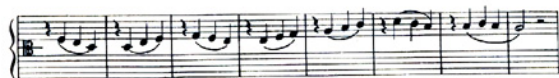
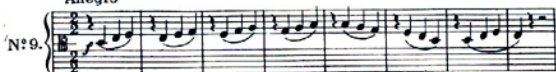
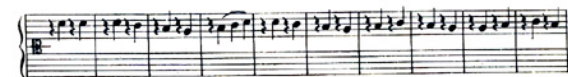
Nº 6.

Allegretto

Nº 7.

Andantino

Nº 8.

*Allegro**Allegretto*

Andante

1ª Manera
N.º 15.
2ª Manera

Allegro

N.º 16.

Andantino

N.º 17.



Allegro



Andante mosso



Ejercicios sobre intervalos de 3ª

Andantino



Nº 21.

Ejercicios sobre intervalos de 4^{ta}

Andante

Nº 22.

Allegretto

Nº 23.

Andantino

N:27.

Ejercicios sobre intervalos de 7^a

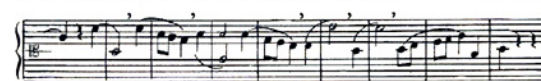
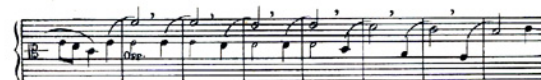
Andante mosso

N:28.

Ejercicios sobre intervalos de 8^a

Allegro

N:29.





Allegro giusto



Ejercicios sobre el doble puntillo
Allegro marcato

1ª Manera
Nº 36.
2ª Manera

Ejercicios sobre el contra tiempo
Allegretto moderato

Nº 37.

Moderato

Nº 38.

Ejercicio para la entonación de los semitonos *FA-FA♯-SOL* y *RE-RE♯-MI*

Andante

Nº 39.

Escala menor natural
Andante sostenuto

Nº 42.

vivite ritardando

Escala menor armónica
Andante tranquilo

Nº 43.

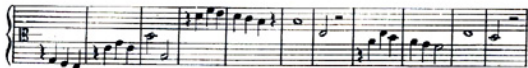
crescendo a poco a poco

rallentando molto

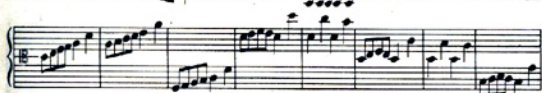




*Exercice
No. 7*





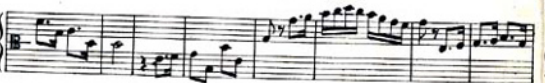
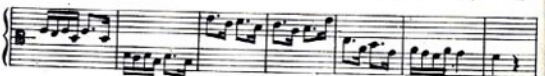
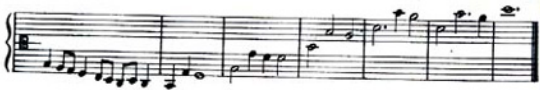


N:21.

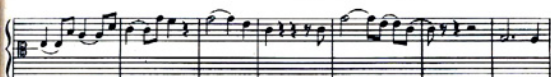
Musical score for N:21, consisting of six staves of music. The notation includes treble and bass clefs, a key signature of one flat (B-flat), and a 2/4 time signature. The music features a variety of rhythmic patterns, including eighth and sixteenth notes, and rests. The first staff begins with a treble clef and a bass clef, followed by five staves that continue the piece.

N:22.

Musical score for N:22, consisting of three staves of music. The notation includes treble and bass clefs, a key signature of one flat (B-flat), and a 2/4 time signature. The music features a variety of rhythmic patterns, including eighth and sixteenth notes, and rests. The first staff begins with a treble clef and a bass clef, followed by two staves that continue the piece.



N: 34.



N^o. 35.

Musical score for No. 35, measures 1-10. The score is written for piano in 2/4 time. It consists of a single system with a grand staff (treble and bass clefs). The melody is primarily in the treble clef, featuring eighth and sixteenth notes, often beamed together. The bass clef provides a simple accompaniment of quarter and eighth notes. The key signature has one flat (B-flat).

N^o. 36.

Musical score for No. 36, measures 1-10. The score is written for piano in 2/4 time. It consists of a single system with a grand staff (treble and bass clefs). The melody is primarily in the treble clef, featuring eighth and sixteenth notes, often beamed together. The bass clef provides a simple accompaniment of quarter and eighth notes. The key signature has one flat (B-flat).

Andantino

N.º 41.

The image displays a musical score for a piano piece, numbered 41 and titled 'Andantino'. The score is written for piano accompaniment, consisting of two staves (treble and bass clefs) joined by a brace. The key signature is one sharp (F#), and the time signature is 3/4. The piece begins with a treble clef and a key signature of one sharp. The notation includes various rhythmic patterns, such as eighth and sixteenth notes, and rests. There are several measures with slurs and ties, indicating phrasing and melodic lines. The score is presented in a single system with ten staves of music.

Andante

N°44.

The musical score for N°44, titled "Andante", is presented in nine staves. The first staff is marked with an asterisk and a treble clef. The subsequent staves are grand staves with treble and bass clefs. The music is in a slow, flowing style with various rhythmic patterns and melodic lines.

Allegretto

N°45.

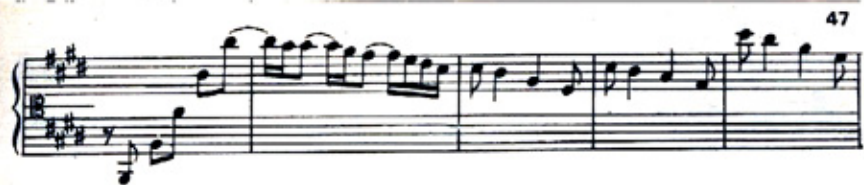
The musical score for N°45, titled "Allegretto", is presented in one staff. The staff is marked with a treble clef and a key signature of one sharp (F#). The music is in a faster, more lively style compared to the previous piece.

Nº 48.

This musical score, titled "Nº 48" and "Andantino", consists of ten systems of piano accompaniment. Each system is written on a grand staff with a treble and bass clef. The music is in a 3/4 time signature and a key signature of one flat (B-flat major or D minor). The piece begins with a melodic line in the right hand, often accompanied by a bass line in the left hand. The notation includes various rhythmic patterns such as eighth and sixteenth notes, as well as rests and dynamic markings. The overall texture is characteristic of a piano solo or accompaniment for a vocal line.

Andantino

N° 53.



Finito

Allegro